

The logo for DART (Dallas Area Rapid Transit) features the word "DART" in a bold, blue, sans-serif font. The letters are partially overlaid by a white, stylized arrow shape pointing to the right. A small registered trademark symbol (®) is located at the bottom right of the logo.

# BLUE LINE

EXPANSION

---

Design / Build Project

# ROWLETT



**Austin Bridge & Road**

## MEETING AGENDA

---

- BACKGROUND
- EXISTING CONDITIONS
- CHALLENGES
- DART SOLUTION
- ACCEPTANCE OF PLAN
- NEXT STEPS



## BACKGROUND

---

- June 4, 2008
  - Public Hearing for DART Service Plan Amendment
- November 2008
  - General Community Meeting
- February 3, 2009
  - Dexham Estates HOA Site Visit
- June 9, 2009
  - Dexham Estates HOA – Betterments
- June 25, 2009
  - Community Meeting – City of Rowlett



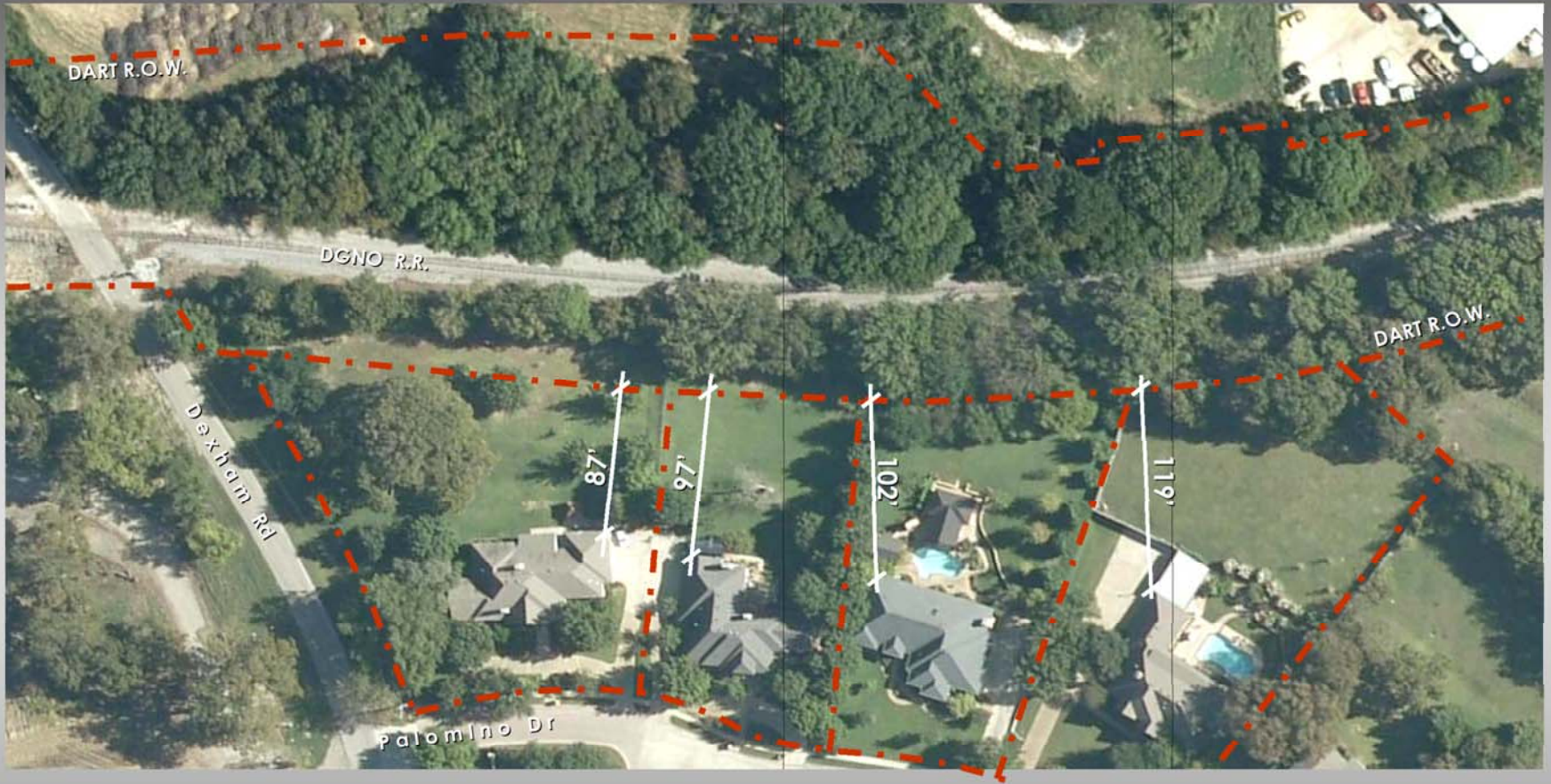
## BACKGROUND

---

- July 16, 2009
  - Dexham Estates HOA – Follow Up Meeting
- August 27, 2009
  - Dexham Estates HOA Progress Meeting



# Dexham Estates Existing Conditions



## CHALLENGES

---

- Drainage conveyance
- Freight relocation
- Available right-of-way
- Construction access
- Safety and security
- Widening Dexham Road



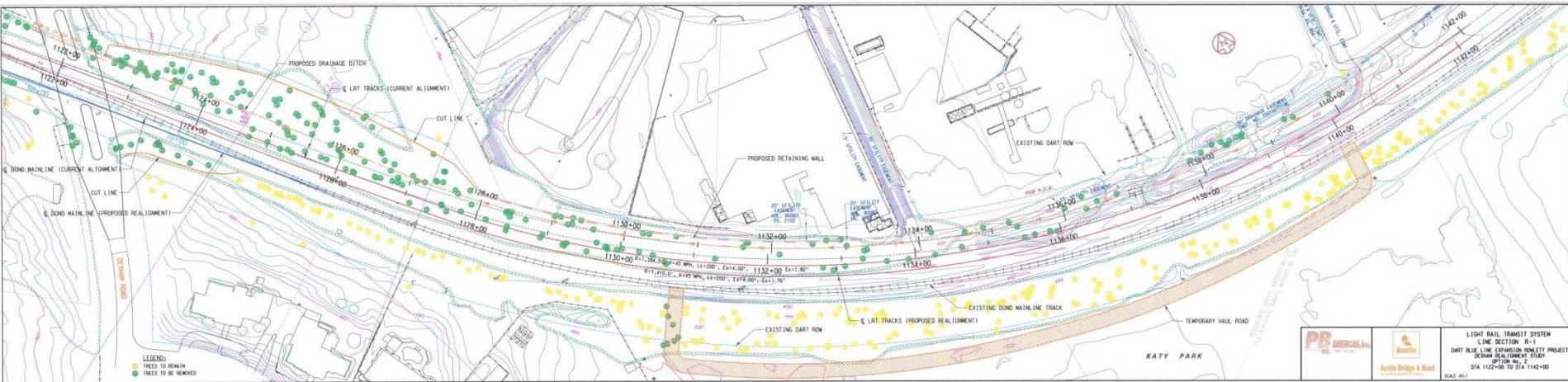
## DART SOLUTION

---

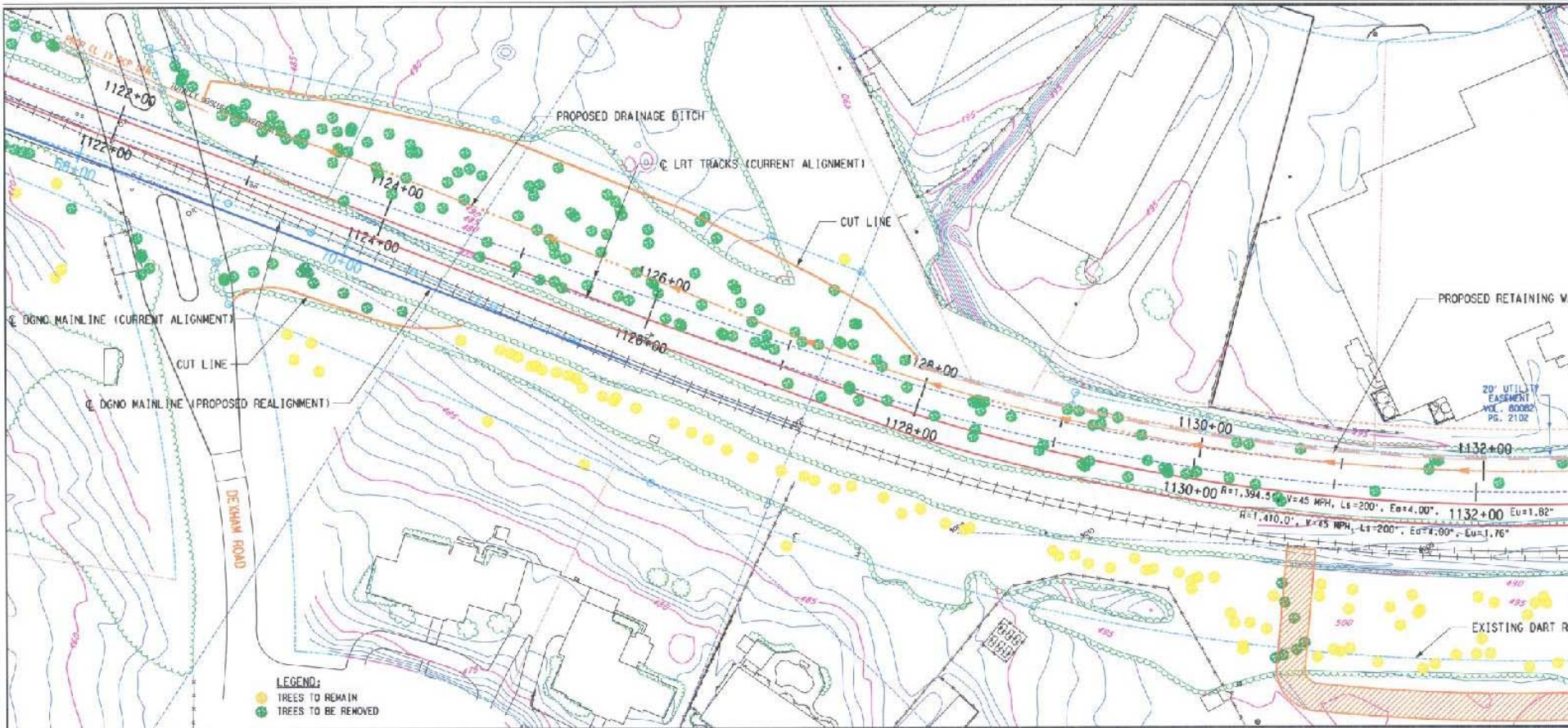
- Many alternatives considered
- DART Solution:
  - Shift LRT closer to freight line
  - Relocate drainage to north
  - Clear trees on north side
  - Save trees on south side



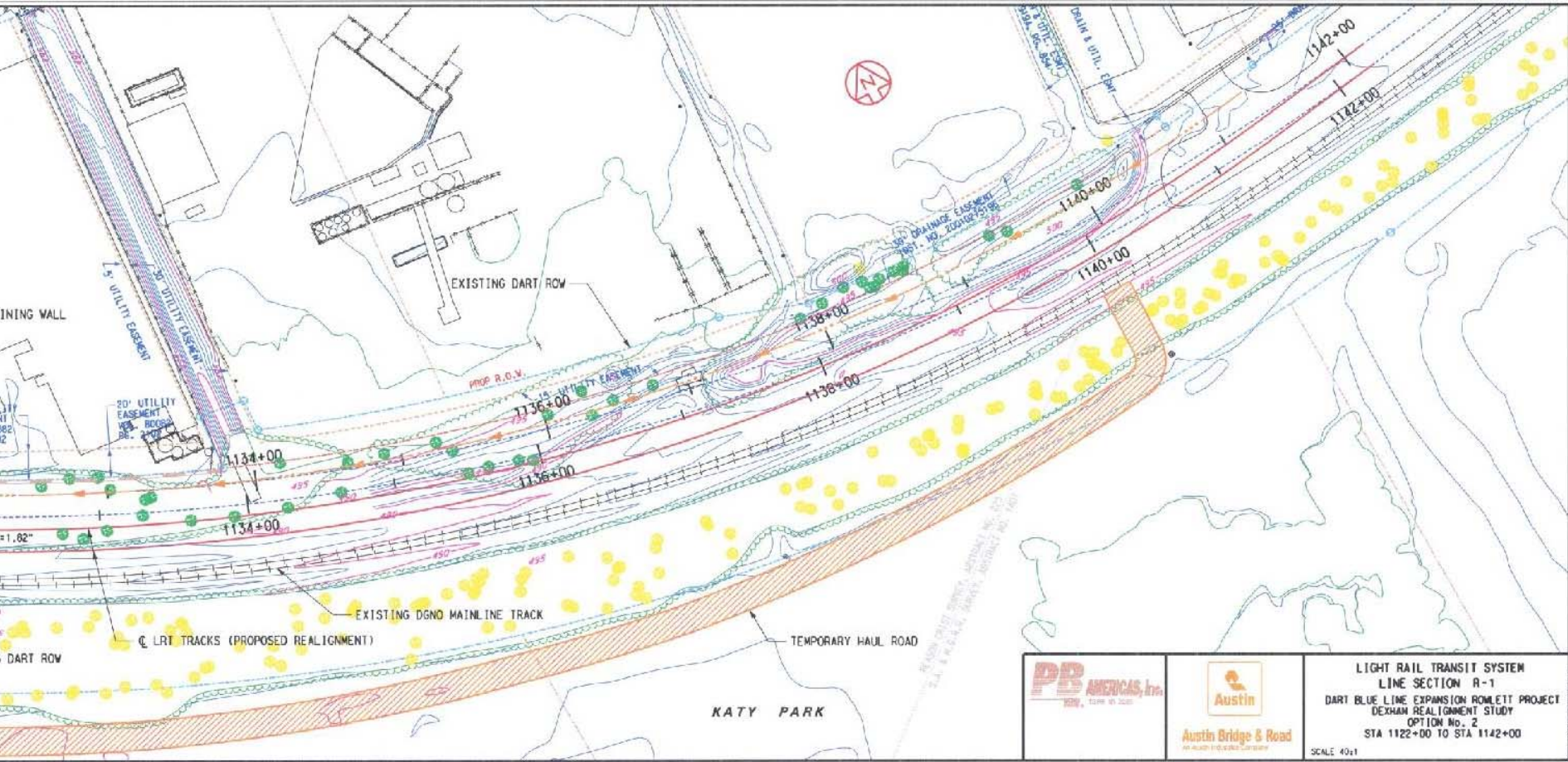
# DART SOLUTION



# Dexham Estates Area

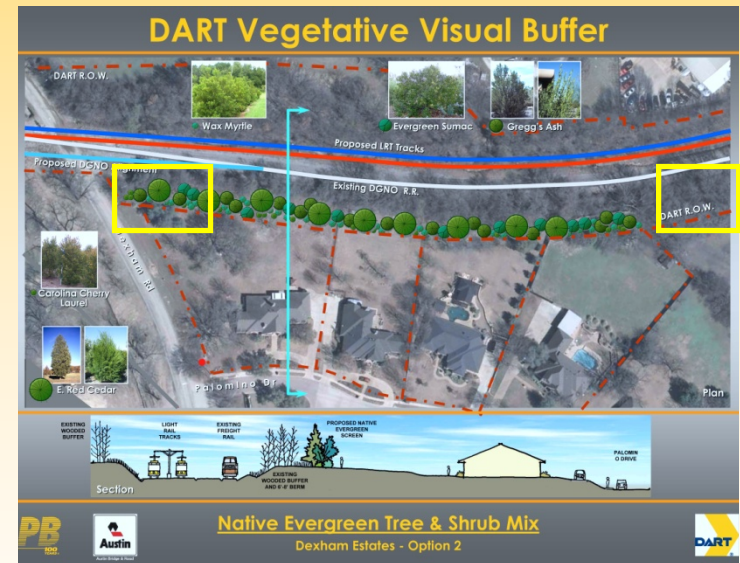


# Katy Park Area



## ACCEPTANCE OF PLAN

- Shift LRT alignment and relocate drainage to north
- Save trees on south
- Cancel second phase of sound study
- Focus landscape screening betterments only at impact locations
- Form license agreement for affected homeowners



## NEXT STEPS

---

- Start clearing operation on north side
- Implement alignment adjustment

